

# SIZE CHART - LADIES

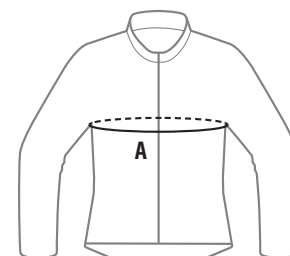


## Avertum Street Tech-Air® Ladies Over and under motorcycle airbag

The Avertum Street Tech-Air® Ladies airbag is designed and certified to be worn over a REV'IT! protective jacket and can also be worn under a properly fitting protective jacket. Over-the-garment design means sizing is aligned: a size-S airbag fits over a size-S jacket and so on.

### 01. HOW TO MEASURE - FOR WEARING OVER A REV'IT! JACKET.

If you plan to wear the Avertum Street Tech-Air® Ladies on the outside of the jacket, then you need to make measurement "A" while wearing the jacket.



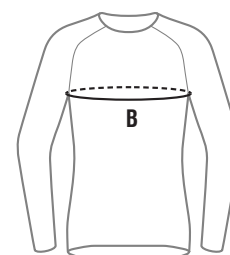
OVER THE JACKET

#### A - CHEST MEASUREMENT (Over the protective jacket)

SIZE	XS		S		M		L		XL		2XL	
A CHEST (CM)	92	101	96	106	100	111	104	116	108	121	112	126
A CHEST (IN)	36 1/4	39 3/4	37 3/4	41 3/4	39 3/8	43 3/4	41	45 5/8	42 1/2	47 5/8	44 1/8	49 5/8

### 02. HOW TO MEASURE - FOR WEARING UNDER A REV'IT! JACKET.

If you plan to wear the Avertum Street Tech-Air® Ladies under the protective jacket, you must take measurement "B" while wearing a baselayer.



UNDER THE JACKET

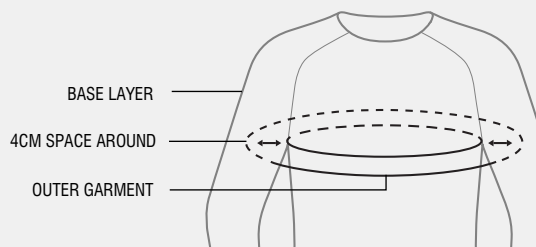
#### B - CHEST MEASUREMENT (Over a base layer)

SIZE	XS		S		M		L		XL		2XL	
B CHEST (CM)	SIZE XS OR S MUST NOT BE WORN UNDER A PROTECTION OUTER GARMENT				90	94	94	99	99	104	104	109
B CHEST (IN)	SIZE XS OR S MUST NOT BE WORN UNDER A PROTECTION OUTER GARMENT				35 3/8	37	37	39	39	41	41	42 7/8

#### WARNINGS!

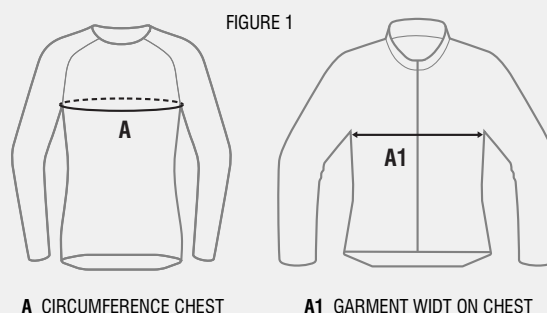
- ! AVERTUM STREET TECH-AIR® LADIES IN SIZE "S" OR BELOW MUST NOT IN ANY CASE BE WORN UNDER A PROTECTION OUTER GARMENT.
- ! IF AVERTUM STREET TECH-AIR® LADIES IS WORN UNDER THE PROTECTIVE JACKET, THE CUSTOMER HAS TO MAKE SURE THE JACKET ALLOWS SPACE ENOUGH FOR A SAFE TECH-AIR® DEPLOYMENT AS PER INSTRUCTIONS IN THE MANUAL P23/24.

(PROVIDING 4CM OF SPACE AROUND THE CIRCUMFERENCE OF THE UPPER BODY TO ACCOMMODATE THE AIRBAG INFLATION OR USING THE FORMULA DESCRIBED IN THE P23 OF THE P23 OF THE MANUAL)



- ! AVERTUM STREET TECH-AIR® LADIES IN SIZES "M" OR LARGER SHALL BE WORN WITH A TECH-AIR® READY REV'IT! OUTER GARMENT OF THE SAME SIZE OF THE SYSTEM OR WITH ANY REV'IT! OUTER GARMENT THAT IS NOT TECH-AIR® READY PROVIDED THAT THE SIZE OF THE REV'IT! OUTER GARMENT IS ONE SIZE LARGER THAN THE SIZE OF THE SYSTEM OR REGARDLESS OF WHETHER IT IS A REV'IT! OUTER GARMENT OR NOT MEETS THE FOLLOWING CRITERIA: FOR THE CHEST AREA, MEASURE THE CIRCUMFERENCE OF THE CHEST (A) AND THE GARMENT WIDTH ON THE CHEST REGION (A1). THE GARMENT IS COMPATIBLE WITH AVERTUM STREET TECH-AIR® LADIES SYSTEM IF  $A1 > 0.5 \times A + 12 \text{ CM}$  ( $A1 > 0.5 \times A + 4.72 \text{ IN}$ ) (SEE FIGURE 1 ON THE RIGHT)

- ! AVERTUM STREET TECH-AIR® LADIES SYSTEM MUST ALWAYS BE USED WITH A PROPERLY FITTING OUTER GARMENT TO THE USER'S APPROPRIATE BODY SIZE. USE OF THE SYSTEM INSIDE AN INCORRECTLY SIZED OUTER GARMENT, OR WITH AN OUTER GARMENT THAT IS NOT COMPLIANT WITH THE SIZE CHECK RECOMMENDATIONS ABOVE, MAY RESULT IN THE SYSTEM MALFUNCTIONING OR FAILURE AND INJURY, INCLUDING SEVERE INJURY AND/OR DEATH.



A CIRCUMFERENCE CHEST

A1 GARMENT WIDTH ON CHEST